










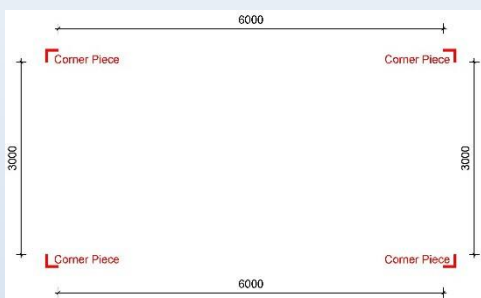
**MATERIALS INCLUDED:**

Small (27mm) Bolts	52 pcs	
Medium (41mm) Bolts	12 pcs	
Long (105mm) Bolts	18 pcs	
Corner Support Pieces	4 pcs	
Bottom Long Beam 5630mm Long & 2.3mm Thick	2 pcs	
Bottom Short Beam 2680mm Long & 2.3mm Thick	2 pcs	
Square Floor Support Tubes 2990mm Long & 80mm x 80mm	9 pcs	

Corner Arms with Slant Cut on Top 2640mm Long & 2.3mm Thick	4 pcs	
Roof Straight Beam 5630mm Long & 2.3mm Thick	2 Pcs	
Roof V shaped Beam 2680mm Long & 2.3mm Thick	2 Pcs	
C Channel Roof Support Beam 5820mm Long	6 Pcs	
Triangular Roof Central Support Beam 2880mm Long	1 Pcs	
Wall Support Beams 2480mm Long & 40mm x 60mm	2 Pcs	
Self-Drilling Screws	10 Pcs	

## INSTRUCTIONS:

1. Get all the **Corner Support Pieces** and place them in a rectangle like the diagram below



2. Get the **Bottom Short Beam** and place it in-between the 2 Corner Support Pieces that are 3 meters apart.



3. Slide the Corner Support Pieces into the Bottom Short Beams. Then use the **Small Bolts** with nuts to secure it. Repeat Step 2 and Step 3 to the opposite site.



4. Get the **Bottom Long Beam** and place it in-between the 2 Corner Support Pieces that are 6 meters apart. Slide the bottom long beams into the Corner Support Pieces and then secure it by using the small bolts with nuts.



5. Repeat step 3 to the opposite side. With the drill go around to each bolt and nut and tighten it to secure the base



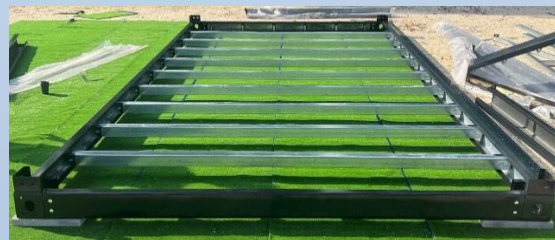
6. You will then have a complete base



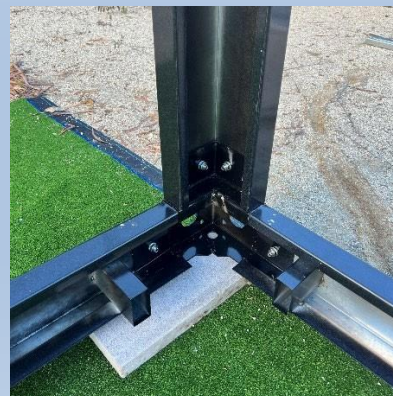
7. Then get the **Square Floor Support Tubes** and insert them into the black brackets that are coming out of the Bottom Long Beam. Then get the **Long Bolts** with nuts and place them through the black beam and square tube to secure it.



8. With the drill go around to each bolt and nut and tighten it to secure it. You will have a complete base with floor support now.



9. Get all the **Corner Arms with the Slant Top** and place them over the Corner Support Pieces. Secure the arms with the **Small Bolts** and nuts.





10. Ensure the lower part of the slant corner arm is facing out.



11. Place the **Roof V Shaped Beam** between the 2 Corner Arms which are approx. 3m apart. Secure these with the **Small Bolts** and nuts. Repeat this to the other side.



12. Place the **Roof Straight Beam** between the 2 Corner Arms which are approx. 6m apart. Secure these with the **Small Bolts** and nuts. Repeat this to the other side.



13. With the drill go around to each bolt and nut and tighten it to secure it.



14. You will then have a frame complete up to the roofing frame now



15. Get **the C Channel Roof Support Beams** and put them between the Roof V Shaped Beam. They C channel will slide into the black brackets that are coming out of the Roof V Shaped Beam. Secure them with **the Medium Bolts** and nuts.



16. Repeat the above until all 6 Channel Roof supports are in. Use the drill to tighten the bolts.



17. Place the **Triangular Roof Central Support Beam** in the centre of the Roof Straight beams. Use the **Small Bolts** and nuts to secure the triangular roof central support beam to the plate that is in the centre of the Roof Straight Beam.



18. Use the **Self-Drilling Screws** and screw them into the plates sticking out of the Triangular Roof Central Support Beam and the C Channel Roof Support Beams.



19. Lastly place the **Wall Support Beams** in the centre of the Bottom Long Beam and the Roof Straight Beam. Use the **Self Drilling Screws** to screw the Wall Support Beam in



# X-Space Home

Contact :Jack Zhu

Email: [jack@x-spacehome.com](mailto:jack@x-spacehome.com)